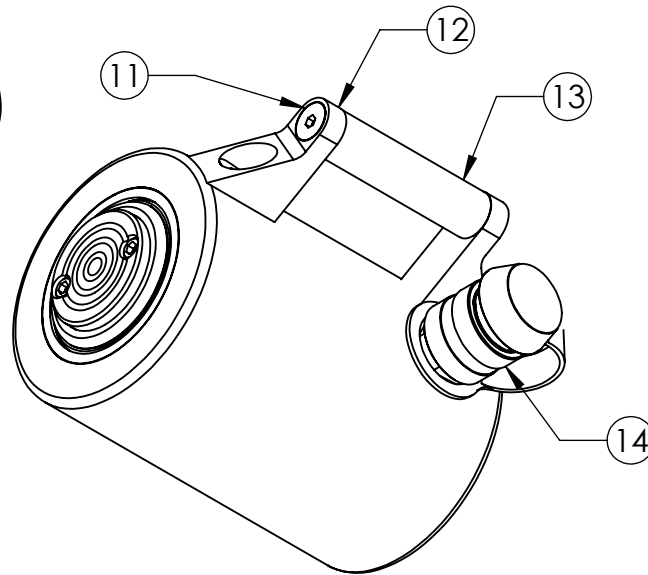
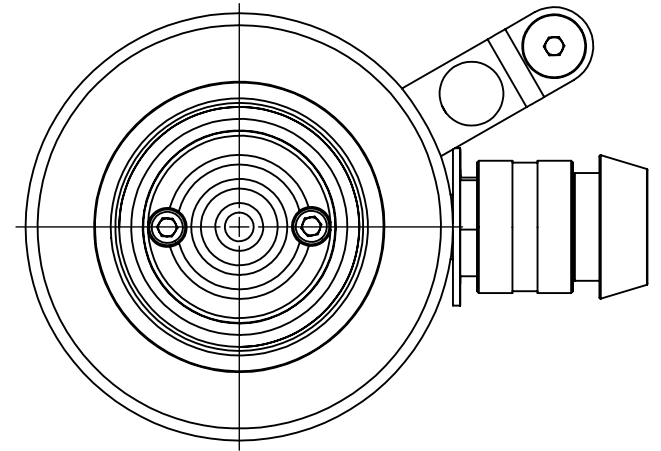
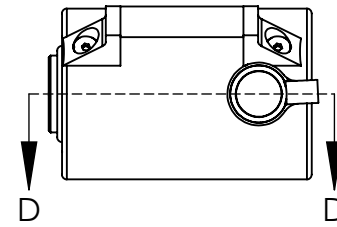


Note: # = stroke

ITEM NO.	QTY.	PART DISCIPTION	ORBIT PART CODE
1	1	SADDLE	OR75 -1
2	1	WIPER RING	OR75 -2
3	1	RETAINING NUT	OR75 - 3
4	1	PISTON	OR75/#- 4
5	1	PISTON SEALS	OR75 - 5
6	1	SPRING ASSEMBLY	OR75/#- 6
7	1	CYLINDER HOUSING	OR75/#- 7
8	2	COPPER GASKET	OR75 - 8
9	2	CAP SCREW	OR75 - 9
10	2	SADDLE SCREWS	OR75 - 10
11	4	ALLAN HEAD COUNTERSUNK SCREW	516NC34
12	2	HANDLE SUPPORT	HND01
13	1	HANDLE BAR	OR75/# - 13
14	1	COUPLER & DUST CAP	FQCDC01
15		75 TON SEAL KIT (2,5,8)	ORS 75

Solid OR 75 Scale 1:5



Solid OR 75 3D Scale 1:3

DO NOT SCALE DRAWING

REVISION AUGUST 2013

ORBIT MANUFACTURING INC.

TITLE:

Assembly

Orbit Manufacturing Inc.
#104 - 3070 Norland Avenue
Burnaby, B.C.
Canada V5B 3A6

DWG NO.

OR 75

Letter

SCALE:1:5

SHEET 1 OF 1