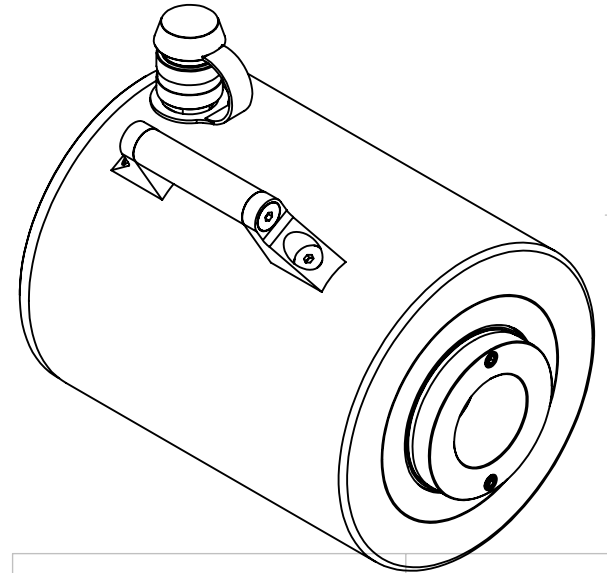
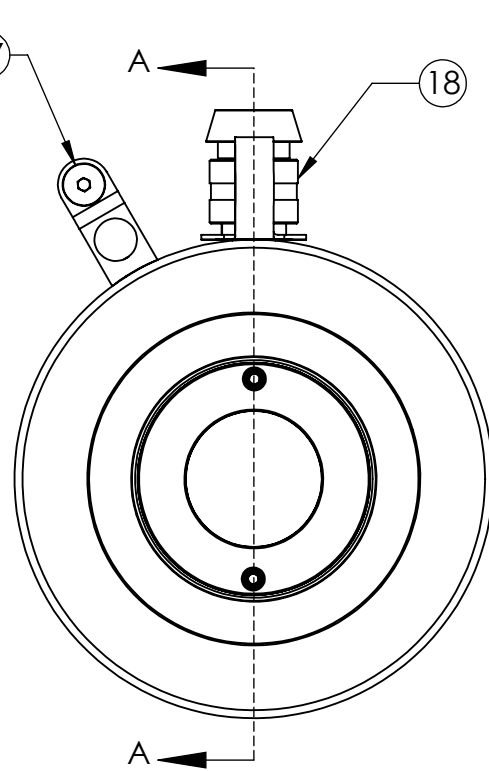
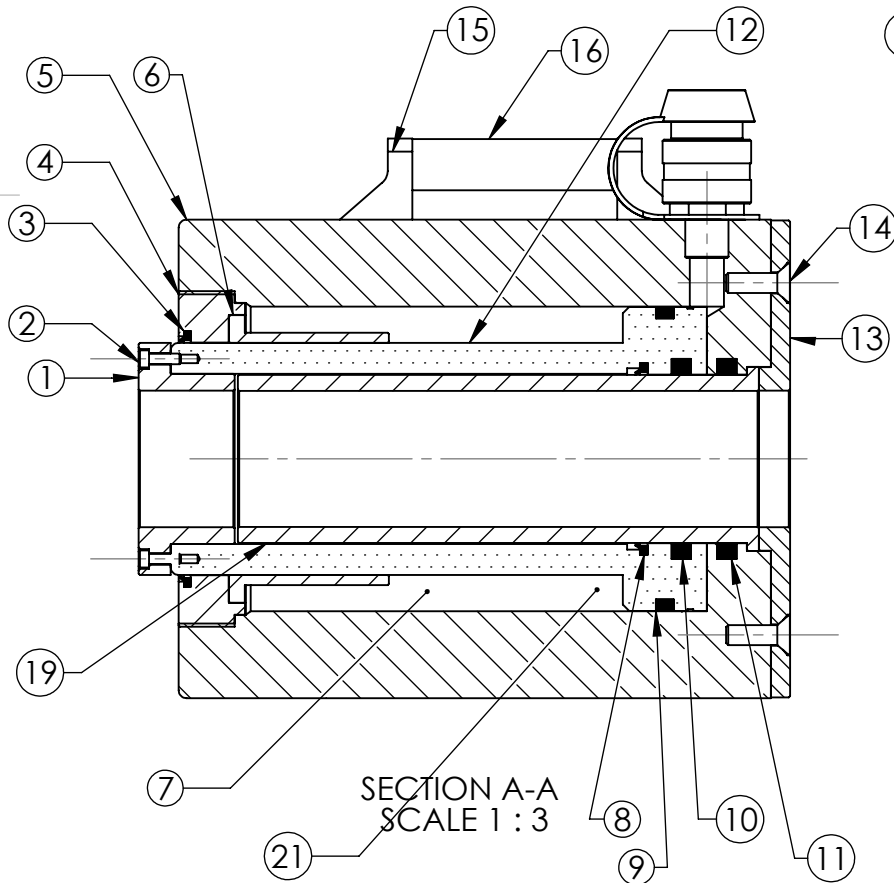


No.	Qty.	Part Description	Part Code
1	1	SADDLE	ORSH60-1
2	2	SADDLE SCREWS	ORSH60-2
3	1	RETAINING WIPER SEAL	ORSH60-3
4	1	RETAINING NUT	ORSH60-4
5	1	CYLINDER HOUSING	ORSH60/#-5
6	1	STEEL INSERT (UPPER)	ORSH60-6
7	1	SPRING (NOT SHOWN)	ORSH60-7
8	1	PISTON WIPER SEAL	ORSH60-8
9	1	PISTON TP SEAL	ORSH60-9
10	1	PISTON POLYPACK	ORSH60-10

No.	Qty.	Part Description	Part Code
11	1	CYLINDER POLYPACK	ORSH60-11
12	1	PISTON	ORSH60/#-12
13	1	RETAINER PLATE	ORSH60-13
14	4	RETAINER PLATE SCREW	516NC34
15	2	HANDLE SUPPORT	HND01
16	1	HANDLE BAR	ORSH60/#-16
17	4	HANDLE SCREW	HNDSC01
18	1	COUPLER & DUST CAP	FQCDC01
19	1	INNER TUBE	ORSH60/#-19
20	1	SEAL KIT (3,8,9,10,11)	ORSHS 60
21	1	STEEL INSERT (LOWER) (NOT SHOWN)	ORSH60-21

Note: # = stroke



DO NOT SCALE DRAWING REVISION

ORBIT MANUFACTURING INC.

TITLE: **ORSH 60 Assembly**

Orbit Manufacturing Inc.
#104 - 3070 Norland Avenue
Burnaby, B.C.
Canada V5B 3A6

DWG NO. **ORSH 60/3 & 6**

SCALE:1:4 SHEET 1 OF 1

A4